



LUDWIG-
MAXIMILIANS-
UNIVERSITÄT
MÜNCHEN

INTERNATIONALE ANGELEGENHEITEN
INTERNATIONAL OFFICE



STUDY WITH US!

International Student Exchange at LMU Munich



3	Welcome to LMU Munich
4	Welcome to Munich
6	Student Exchange at LMU Munich
8	Student Life
10	Your Contact at LMU Munich



WELCOME TO LMU MUNICH

Excellence Ranked as one of Germany's top comprehensive universities, LMU Munich is one of the leading universities in Europe and in the world. With our consistently high ratings you can be confident that you are choosing a university which is committed to helping you fulfil your potential through excellent research and world-class teaching. 13 Nobel laureates bear testimony to LMU Munich's commitment to top-level research.

Comprehensiveness Degree programs are available in 200 subjects. 760 professors and 5,500 academic staff members in our 18 faculties cover areas of knowledge as diverse as Humanities and Cultural Sciences, Law, Business and Economics, Social Sciences, Medicine and Sciences.

Tradition and Modernity Founded in 1472, LMU Munich is one of the oldest universities in the world. Tradition, however, is coupled with a track record of ground-breaking research, which continues to produce innovations and expand into new fields.

Internationality Being Germany's largest university, LMU Munich also has one of the most international student populations in the country. Approximately 15 percent of our 51,000 students come from abroad. Almost 1,400 individual exchange agreements for student, faculty and staff mobility with about 500 universities world-wide are in place. Around 1,000 students from our partner universities come to Munich on exchange every year.

Hospitality Despite the size of our student population, both national and international, it is our aim to make sure that every exchange student feels welcome and taken care of. The International Office of LMU Munich takes pride in its reputation for hospitality.





English Garden



Oktoberfest Munich



Olympic Park



Augustiner Beergarden



WELCOME TO MUNICH

Attractiveness Munich, home to approximately 1.5 million people, is a friendly and vibrant city. It is in an attractive location in close proximity to the Bavarian Alps. With a number of famous museums, art galleries, theatres and opera houses, the capital city of Bavaria is a major European cultural centre.

Student City Munich is home to 10 universities and approximately 120,000 students who ensure that university life does not just consist of lectures and tutorials. LMU Munich is not a campus university: University institutes and departments are scattered throughout the city. The main university building, however, is located right in the city centre, is easily accessible by public transport and has numerous student cafes, restaurants, bookstores, art galleries and a variety of small shops nearby providing you with everything from photocopies to a quick haircut.

Public Transport Munich offers an extensive public transport system. Busses, trams, subway and suburban railway will bring you wherever you want to go. Cycling is extremely popular in Munich, so using a bike is a good alternative.

Friendliness Munich combines the vitality of a large and modern metropolis with the safety and *Gemütlichkeit* of a smaller town. It is a friendly place you can settle into quickly, but which still feels fresh and exciting once you get to know it well.

You will soon feel at home.



Marienplatz

STUDENT EXCHANGE AT LMU MUNICH

Student Exchange As an exchange student you will join us as a non-degree seeking student on the basis of a bilateral student exchange agreement between LMU Munich and your home university.

Advantages for Exchange Students

- ▶ The International Offices of both universities will support you.
- ▶ You will go through a simplified admission procedure.
- ▶ You will not need to take an official German language test.

Duration As an exchange student, you can stay for a maximum of 2 semesters per degree program.

Nomination You have to be nominated by your home university and cannot apply directly to LMU Munich. Please contact the International Office at your home university if you wish to study at LMU Munich as an exchange student.

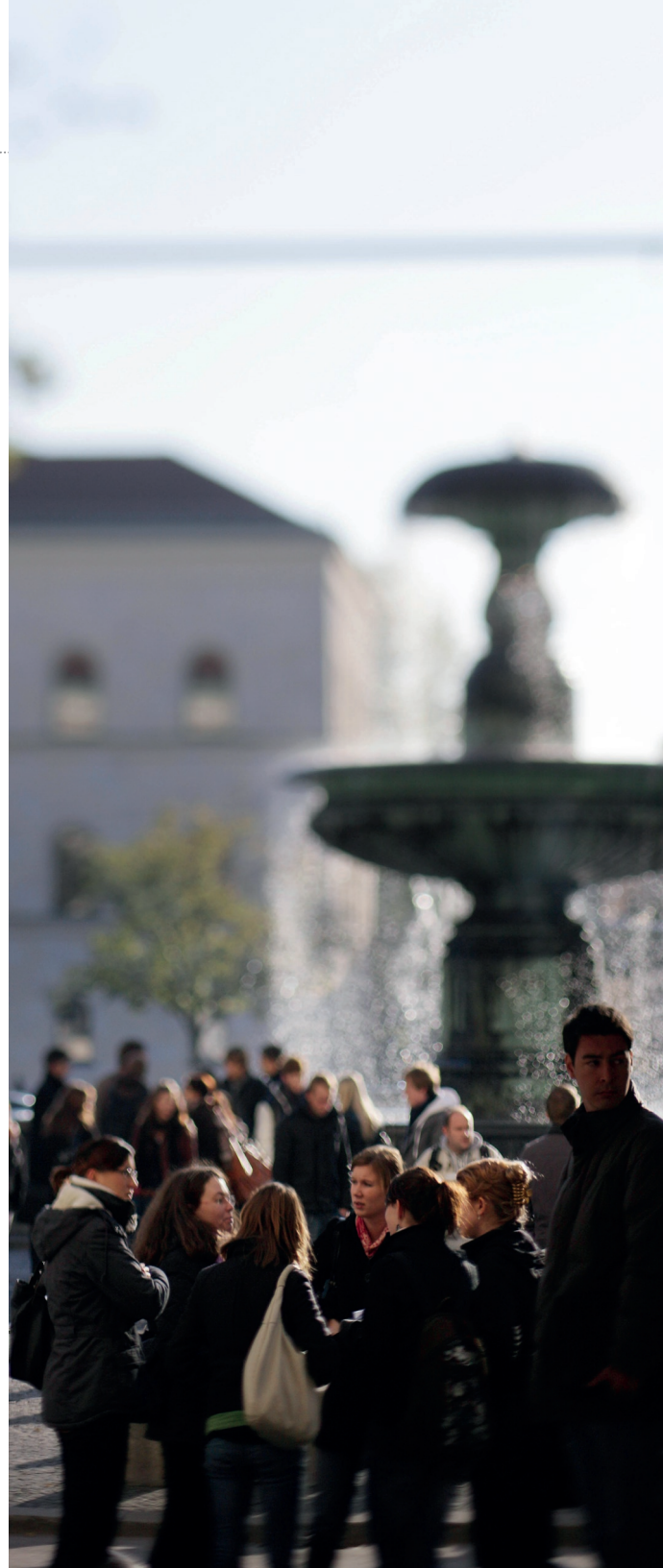
Academic Calendar

First (winter) semester: October – February

Second (summer) semester: April – July

18 Faculties

- ▶ Biology
- ▶ Business Administration
- ▶ Catholic Theology
- ▶ Chemistry and Pharmacy
- ▶ Cultural Studies
- ▶ Economics
- ▶ Geosciences
- ▶ History and the Arts
- ▶ Languages and Literatures
- ▶ Law
- ▶ Mathematics, Computer Science and Statistics
- ▶ Medicine
- ▶ Philosophy, Philosophy of Science and the Study of Religion
- ▶ Physics
- ▶ Protestant Theology
- ▶ Psychology and Educational Sciences
- ▶ Social Sciences
- ▶ Veterinary Medicine



Wide Range of Programs With degree programs available in 200 subjects in numerous combinations, the array of courses we have to offer is extremely wide.

Teaching In most subjects we differentiate between lectures and all other types of courses. Lectures are large-scale events which usually do not require active student participation. In all other courses you are expected to do presentations and actively contribute to the discussions while the instructor's role is more that of a moderator.

Course Selection As an exchange student you must choose at least 50 % of your course modules from one department. If the exchange agreement between our universities is anchored in a specific subject area, then you must take 50% of your courses in the relevant LMU department. You should take the other 50% of your course modules in no more than two other departments.

Language of Instruction The language of instruction for most courses is German. Almost all faculties, however, offer a certain number of Bachelor and Master classes in English. To make the most of your experience in Munich and at our university, we strongly recommend that you start learning German before you come to Munich.

How to Find Courses Taught in English A set of instructions in English for navigating the online course catalogue can be found at:

www.lmu.de/en/international/incoming



STUDENT LIFE

Accommodation The Studentenwerk München (Student Services Organization) provides a limited number of places in student residences, but housing cannot be guaranteed for all exchange students. The housing application is integrated in the online admission form, which can be found at the International Office website. Those who are not successful will have to look for private accommodation.

Living Costs You should calculate a monthly budget of at least 800€ for your stay in Munich. A major part of your expenses will be for accommodation. Rents in Munich range from 270€ to 370€ for a room in a student residence and start at approximately 450€ for private accommodation. With a valid student identity card, students have access to price reductions for public transport, at the student cafeterias and at cultural events (e.g. theatre, concerts, museums, etc.). You will receive this card shortly after enrolment.

Language & Preparation Courses To optimize your start at LMU Munich we recommend that you take part in the LMU language and orientation program which is offered for newcomers in September and March. In a relaxed learning atmosphere you can improve your language skills, make new acquaintances and get to know LMU. Affiliated language schools of LMU Munich offer programs for international students at very competitive rates. These programs range from beginners' classes to specialized academic language classes for advanced students.

LMU Buddy Program Having a buddy is a great way to find your feet as a new student of LMU Munich. If you wish to have a buddy, you will be partnered with one of our students, who will help you organize your stay in Munich.



Social and Cultural Programs Several student groups organize cultural events, trips and a lot of other leisure activities for international students.

Libraries LMU Munich has excellent library resources, consisting of the extensive central university library and numerous libraries in individual departments. Partnerships with other libraries in Munich include the Bavarian State Library which is one of the largest research libraries in the world. It is also part of a Germany-wide open lending system of university libraries.

Sports The Munich University Sports (ZHS) offers Munich's students a comprehensive program of sports ranging from aerobics to yachting.

<http://www.zhs-muenchen.de/en>

Student Services Organization For all social, financial and cultural concerns, the Studentenwerk (Student Services Organization) is one of the first points of contact. Whether you need information on accommodation, food, financial aid or counselling, the team of the Studentenwerk will be glad to assist you. The Studentenwerk also runs the canteens and cafeterias at LMU Munich.

www.stwm.de/en



YOUR CONTACT AT LMU MUNICH

The International Office of LMU Munich We are there to give you guidance and support before and during your stay at LMU Munich and look forward to welcoming you!

www.lmu.de/en/international/incoming

Erasmus students: erasmus-incoming@lmu.de

LMUexchange students: lmexchange-incoming@lmu.de

Postal address:

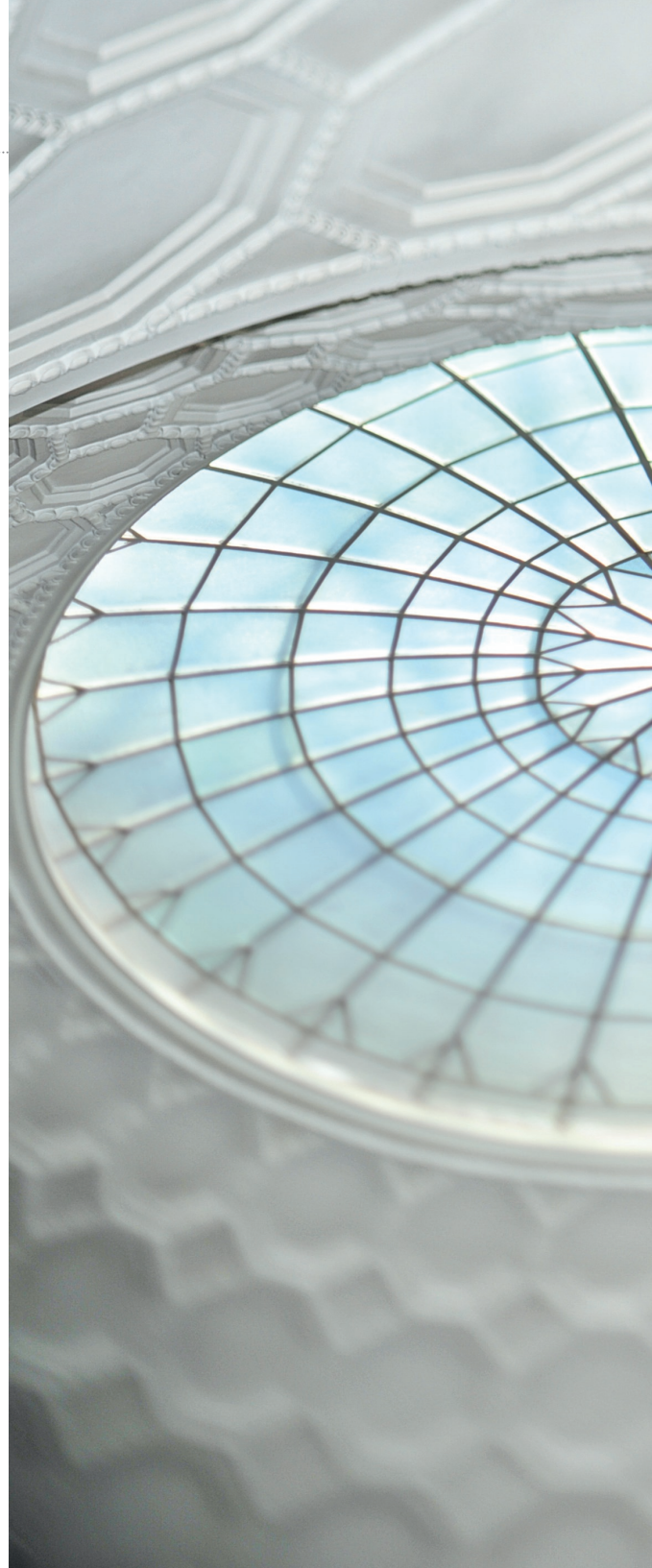
Geschwister-Scholl-Platz 1

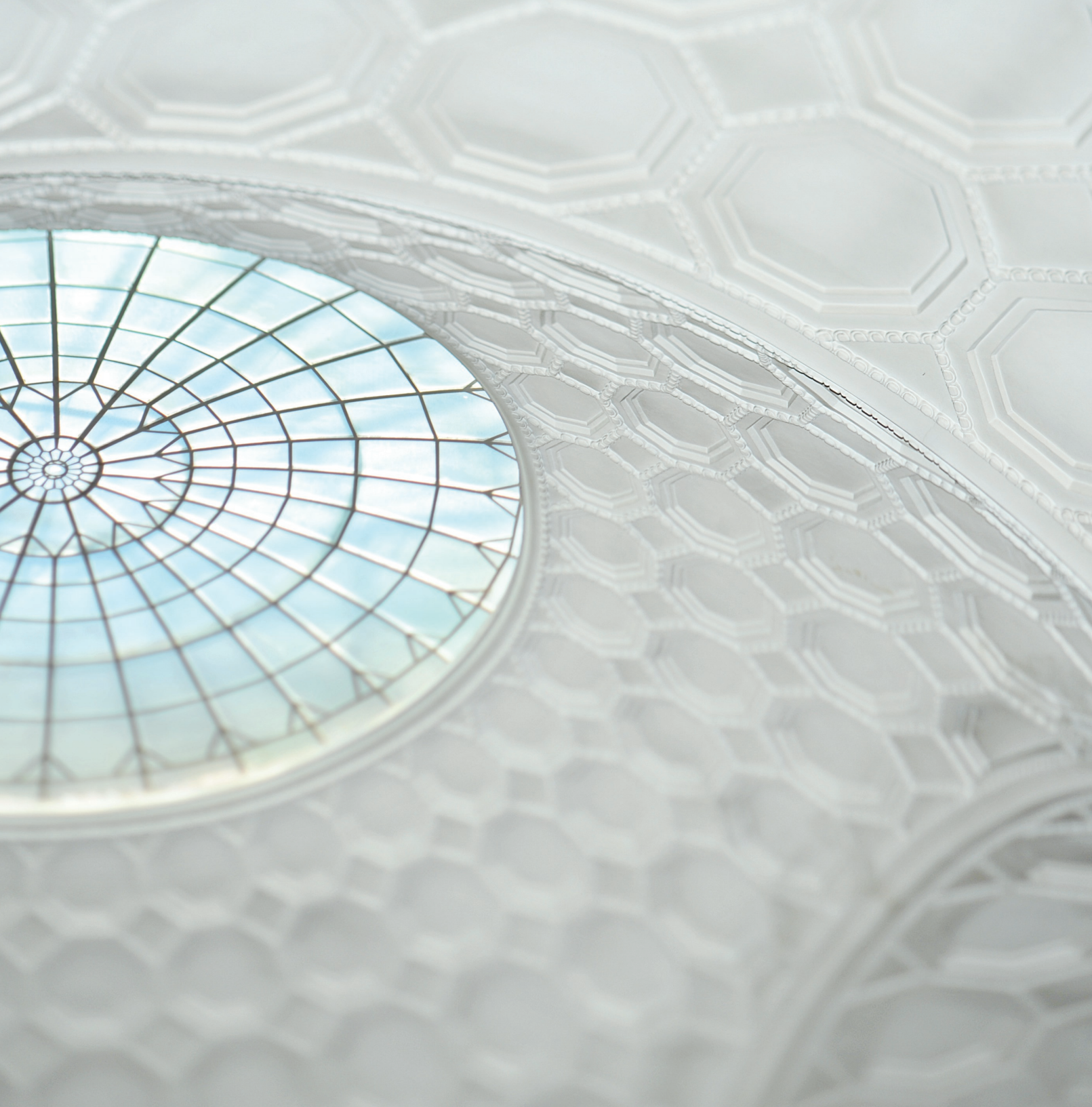
D-80539 Munich

Fax: +49 89 2180-3136



Images: LMU Munich
August 2019





[illegible]