

# Study Abroad at Aberystwyth University

Sarah Hosker – Global Opportunities Officer  
The Global Opportunities Team

# Meet The Global Opportunities Team

	<b>Marian Gray</b>	Head of Global Opportunities
	<b>Cathy Piquemal</b>	Summer School & Short Programme Manager
	<b>Pamela Heidt</b>	Operations Manager
	<b>Sarah Hosker</b>	Global Opportunities Officer – Inbound
	<b>Helena Anderson</b>	Global Opportunities Officer – Outbound

## Contact Details

E-mail: [global@aber.ac.uk](mailto:global@aber.ac.uk)

Daily Drop-in Mon - Fri, 1 - 2pm in the [Global Opportunities Office](#)

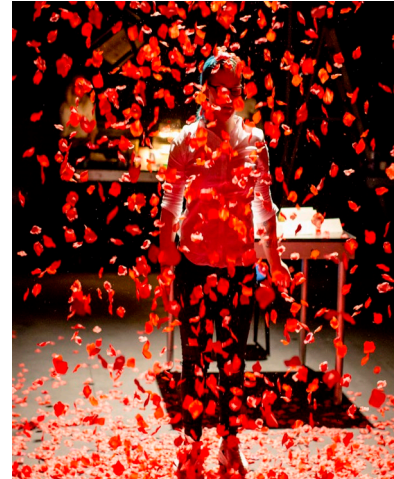
Bookable appointments for [Sarah](#) or [Helena](#)



An aerial photograph of the Aberystwyth University campus. The image shows a large green football pitch in the foreground, surrounded by dense trees. In the background, there are several university buildings, including a large central hall and a tall tower. The campus is situated on a hillside, with a town and the sea visible in the distance under a blue sky with scattered clouds.

Welcome to Aberystwyth University

Aberystwyth is one of the top universities in the UK for student satisfaction





---

# Our Location

---

- Located on the West coast of Wales
- Good travel links to the rest of Wales and the UK



# Campus Life





# Accommodation

Pentre  
Jane  
Morgan

Fferm  
Penglais

Cwrt Mawr

Rosser

Trefloyne

# Accommodation

- Average cost: £85-£160 per week
- Guaranteed accommodation for exchange students
- 10 minute walk to classes on average
- All bills included
- Sports Centre Membership included
- Meal plan options available
- On-site residential assistants

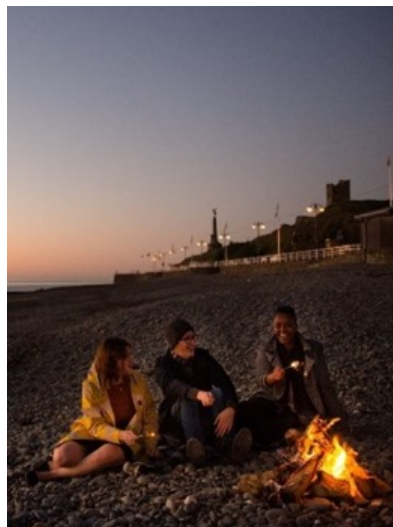
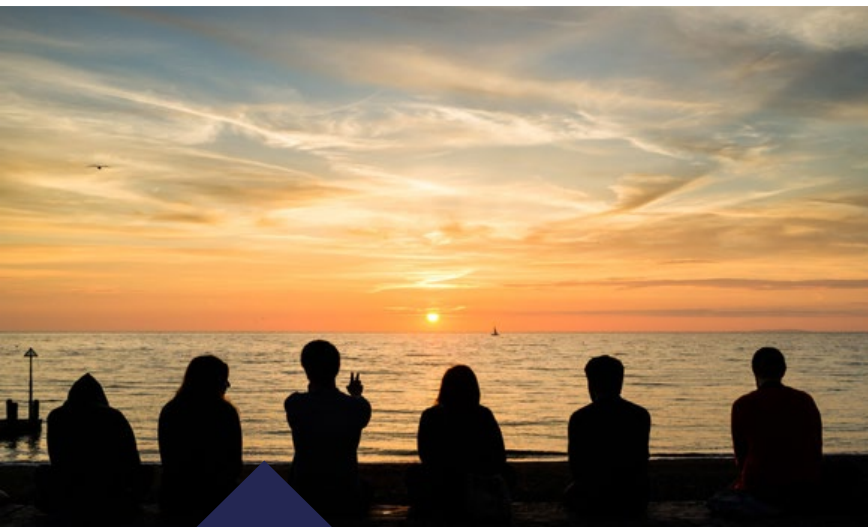




# There's plenty to do!

- Over 100 different Student Societies & Sports Clubs
- In the Heart of Wales!
- Outdoor activities
- Vibrant Community Town
- Welsh & English Culture









# ABERYSTWYTH UNIVERSITY

## Sports & Societies



PRIFYSGOL

ABERYSTWYTH  
UNIVERSITY



# Students Union events

- Superteams
- Aber 7's
- Varsity
- Aber Challenge



# Aberystwyth Arts Centre

- Largest Arts Centre in Wales!
- 'National flagship for the arts'
- Theatre and concert space welcoming bands, comedians and travelling shows
- Own restaurant, café and bar
- Arts & crafts classes
- Right in the middle of campus!



# National Library of Wales

- 1 of only 6 legal deposit libraries in the UK
- Holding over 6.5 million books & periodicals
- Aims to collect and preserve materials related to Wales and Welsh life that can be utilised by the people of Wales for study and research purposes





# Subject areas

Accounting & Finance  
Agriculture & Animal Science  
Art & Art History  
Biochemistry, Genetics & Microbiology  
Biology & Zoology

Business & Management  
Computer Science  
Drama, Theatre, Film & Television  
Economics  
Education & Childhood Studies  
Engineering  
English & Creative Writing  
Geography & Earth Sciences  
History  
Information Studies  
Law and Criminology  
Marine & Freshwater Biology

Marketing  
Mathematics  
Modern Languages  
Physics  
Politics & International Politics  
Psychology  
Social Science  
Sport & Exercise Science  
Tourism  
Veterinary Biosciences & Equine  
Welsh & Celtic Studies



# We're a Research University!

- 95% of Research of an internationally recognised standard or higher.
- Taught by top academics and researchers
- Research embedded in our teaching and **your** learning
- Find out more:

[www.aber.ac.uk/en/research/](http://www.aber.ac.uk/en/research/)



---

# How do I apply?

---

## Applying is easy!

1. Ask to be nominated for exchange at Aber
2. We will then contact you with application instructions
3. Complete our online application form and send us a copy of your passport, an official transcript, and an academic reference



---

# What visa do I need?

---

- US Single Semester exchange students don't need a visa!
- Full Year exchange students will need to apply for a Student Visa
- We have a dedicated Immigration Advisor, Rosa Soto, who will help you with any visa or immigration queries!
- Find out more here: <https://www.aber.ac.uk/en/sscs/visa-support-advice/visas-immigration/>

---

# What can I study?

---

- At Aberystwyth University you can choose modules from a variety of different degree schemes and departments!
- We have Academic Advisors from each department on hand to help you choose the modules that are right for you and provide guidance on what is suitable for your degree
- Credits can then be transferred to your home university at the end of your exchange!



---

# Dates of Term

---

- Aberystwyth University follows a two semester system.
- Semester One runs from the end of September until the end of January of the following calendar year with examinations held in January.
- Semester Two runs from the last week of January until the end of May, with examinations held in May.
- Alternative assessments available if possible.

[Detailed information on the exact dates is available here](#)

---

# Important dates

---

Nominations for	Semester 1 & Full Year	Semester 2
Deadline	15 April	15 September
Applications for	Semester 1 & Full Year	Semester 2
Deadline	1 May	1 October

# Watch our Webinar Series!

'[A Taste of...](#)' a series of lively interactive events engaging students in discussion on contemporary issues, designed to enrich their current studies whilst bringing to life the wealth of academic possibilities available at university.

'[Student Insight](#)' series covering a range of topics, giving a clear insight into elements of the student experience at university.





# Find out more!

The Global Opportunities team  
will be happy to chat to you  
about your options

Send us a message  
[global@aber.ac.uk](mailto:global@aber.ac.uk)

